

Islands in the Pilbara

MAP 1 Pilbara Inshore Islands

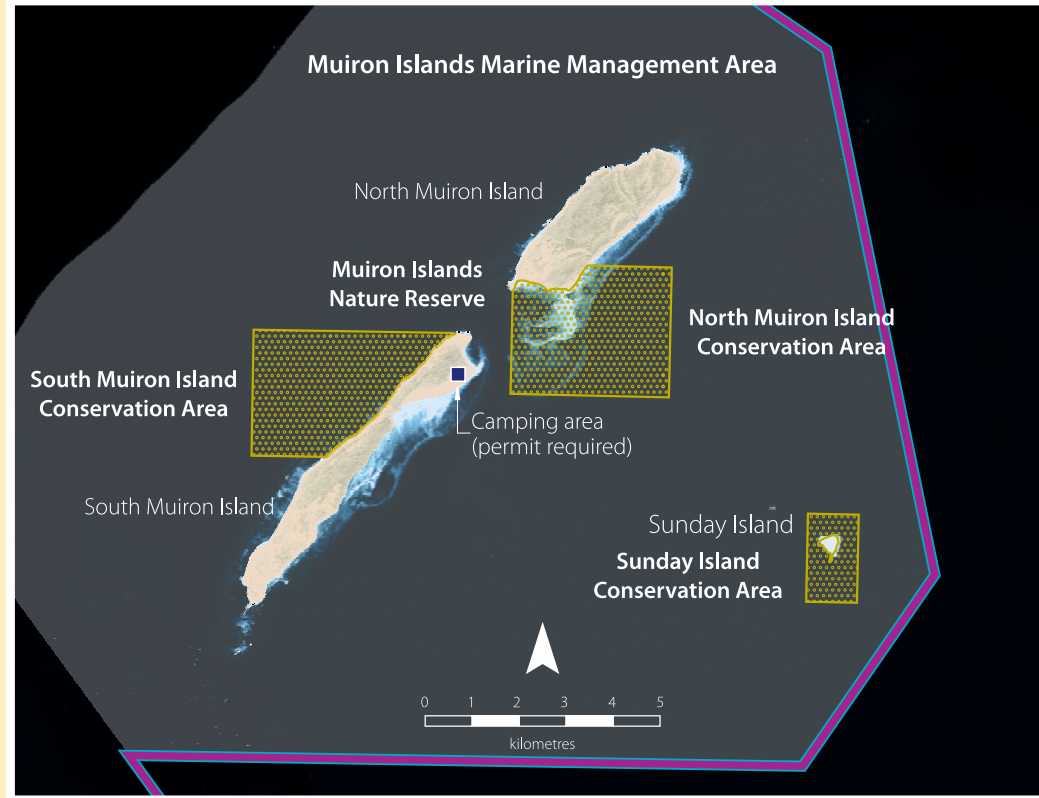
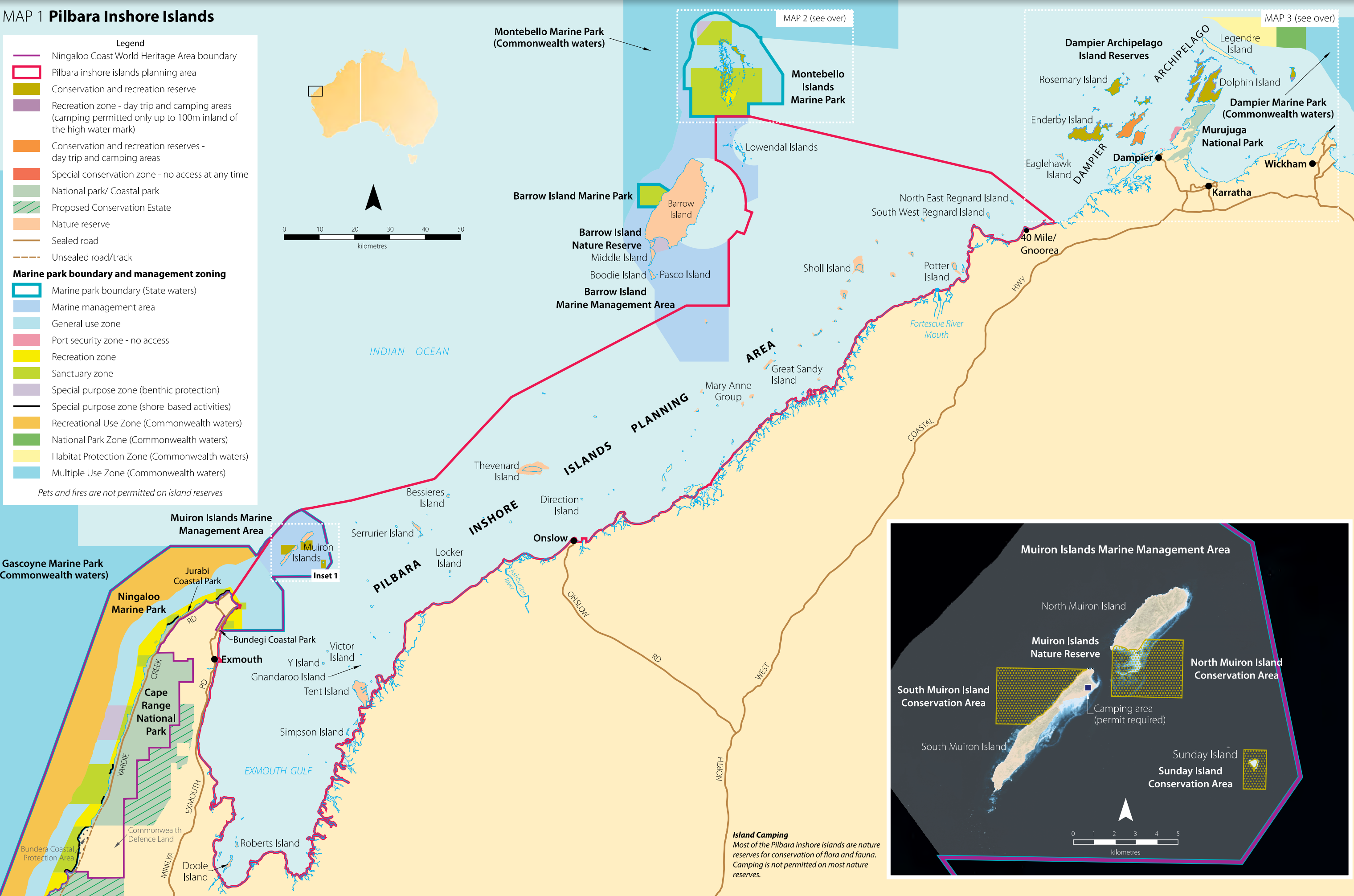
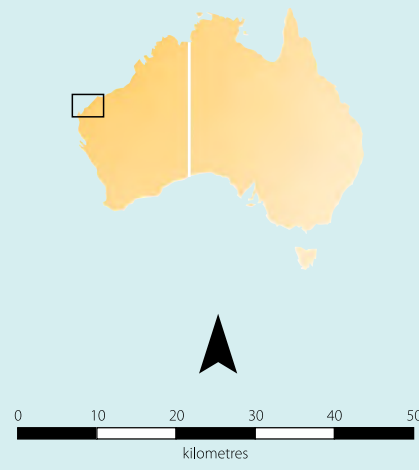
Legend

- Ningaloo Coast World Heritage Area boundary
- Pilbara inshore islands planning area
- Conservation and recreation reserve
- Recreation zone - day trip and camping areas (camping permitted only up to 100m inland of the high water mark)
- Conservation and recreation reserves - day trip and camping areas
- Special conservation zone - no access at any time
- National park/ Coastal park
- Proposed Conservation Estate
- Nature reserve
- Sealed road
- Unsealed road/track

Marine park boundary and management zoning

- Marine park boundary (State waters)
- Marine management area
- General use zone
- Port security zone - no access
- Recreation zone
- Sanctuary zone
- Special purpose zone (benthic protection)
- Special purpose zone (shore-based activities)
- Recreational Use Zone (Commonwealth waters)
- National Park Zone (Commonwealth waters)
- Habitat Protection Zone (Commonwealth waters)
- Multiple Use Zone (Commonwealth waters)

Pets and fires are not permitted on island reserves



Island Camping
Most of the Pilbara inshore islands are nature reserves for conservation of flora and fauna. Camping is not permitted on most nature reserves.

Islands in the Pilbara



Department of Biodiversity,
Conservation and Attractions



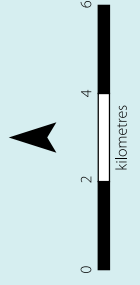
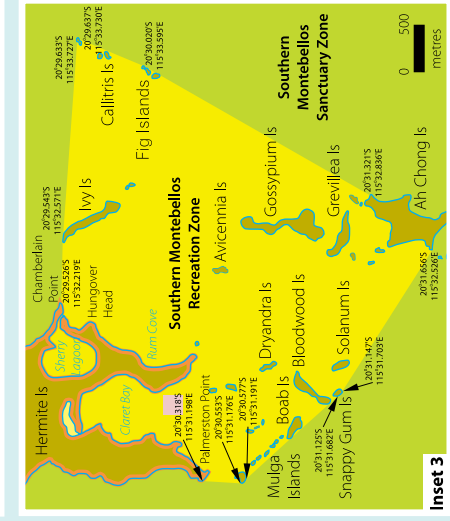
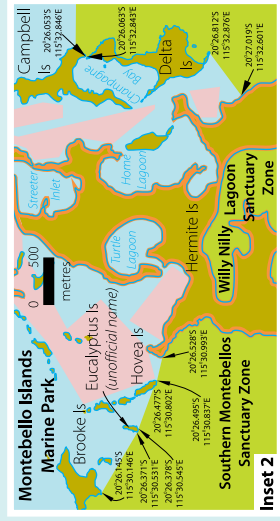
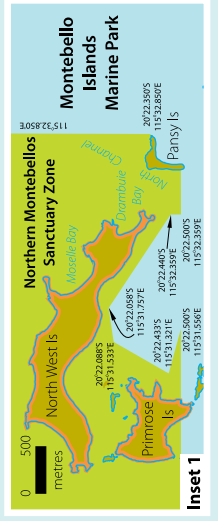
Montebello Marine Park (Commonwealth waters)

MAP 2 Montebello Islands Marine Park



- Legend**
- Marine park boundary (State waters)
 - Marine management area
 - Conservation reserve
 - Sanctuary zone
 - Special purpose zone (benthic protection)
 - Special purpose zone (pearling)
 - Recreation zone
 - General use zone
 - Camping permitted
 - Elevated radiation zone
 - Multiple Use Zone (Commonwealth waters)
 - Pets and fires are not permitted on island reserves

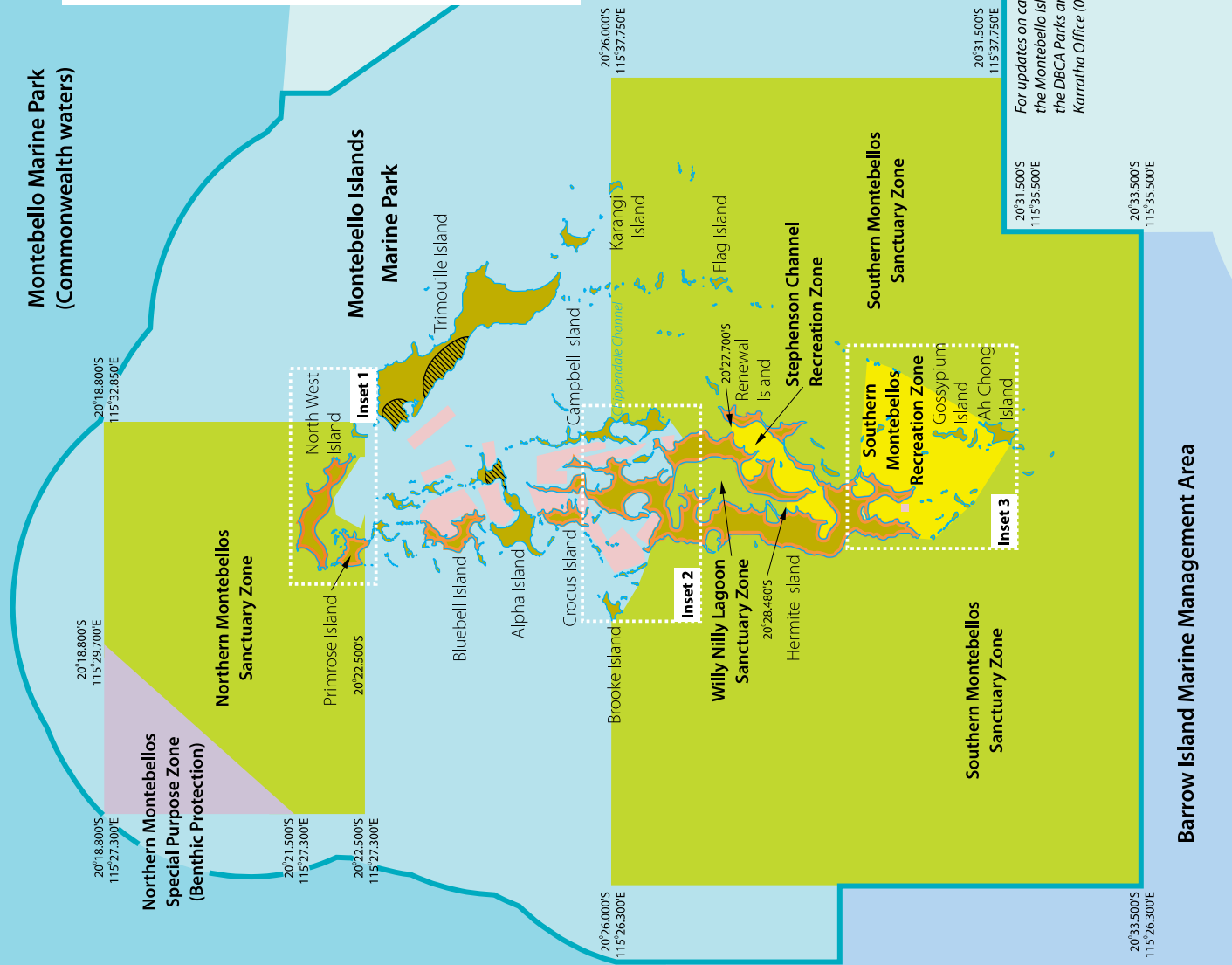
Positions on this map are referenced to the Geocentric Datum of Australia 1994 (GDA94). For GPS use, GDA94 approximates WGS84. This map is for illustration purposes and not for navigation.



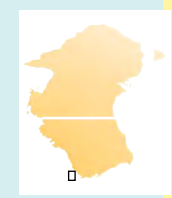
INDIAN OCEAN

For updates on camping arrangements at the Montebello Islands, please contact the DBCA Parks and Wildlife Service, Karratha Office (08) 9182 2000.

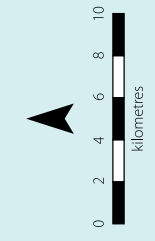
Barrow Island Marine Management Area



MAP 3 Dampier Archipelago Island Reserves



- Access zoning for island reserves**
- Sealed road
 - Unsealed road
 - Special conservation zone - no access at any time
 - Conservation zone - day access only
 - Recreation zone - day trip and camping areas (camping permitted only up to 100m inland of the high-water mark)
 - Conservation and recreation reserves - day trip and camping areas
- Pets and fires are not permitted on island reserves*
- Legend**
- Fishing restrictions - contact Department of Primary Industries and Regional Development
 - National Heritage Listed area
 - Port security zones - no access
 - Launching ramps
 - Minor unsealed launching ramps
 - Mooring area - navigate with caution
 - CAUTION - The Dampier Archipelago has a 5-metre tidal range
 - National Park Zone (Commonwealth waters)
 - Habitat Protection Zone (Commonwealth waters)
 - Multiple Use Zone (Commonwealth waters)



Dampier Marine Park (Commonwealth waters)

