

# PENGUIN ISLAND

The maintenance will take place between

**January - March 2025**

The trail closure will commence at the time of construction works and will be open as soon as possible after the completion.



## MAINTENANCE

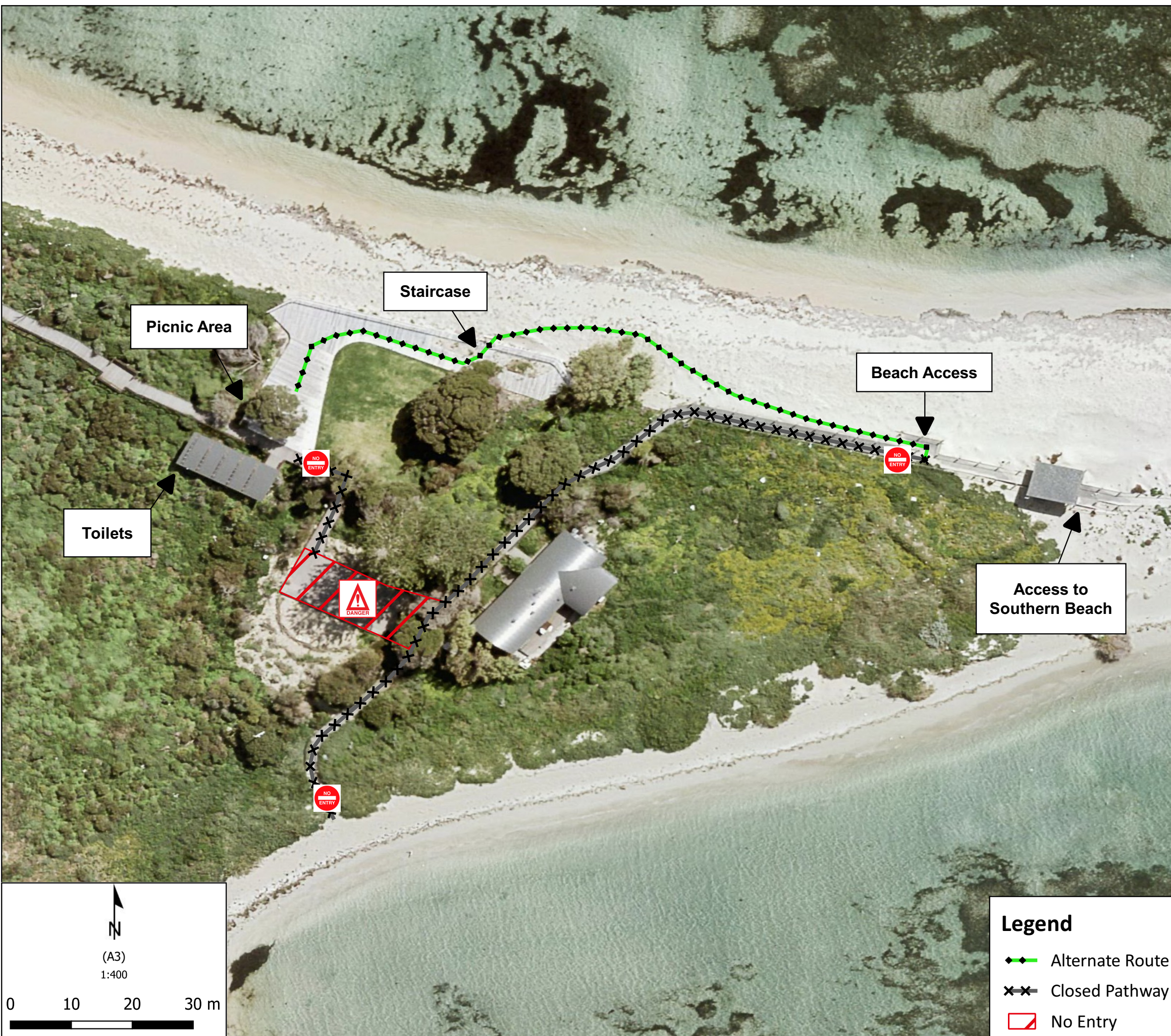
Penguin Island will remain open to the public during the final stages of upgraded interpretation infrastructure installation.

From Tuesday 28 January, the information hub, seating and signage will be installed on decked areas around the island.

Works are expected to take 6-8 weeks to complete.

Access to the picnic area and toilets is available via the beach and a staircase.

For more information, visit:  
<https://exploreparcs.dbca.wa.gov.au/park/penguin-island-conservation-park> or contact the Parks and Wildlife Service Regional Parks office on (08) 9442 0300.



### Legend

- ◆◆◆ Alternate Route
- ××× Closed Pathway
- No Entry